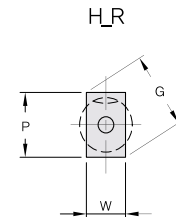
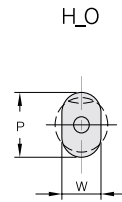
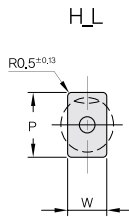
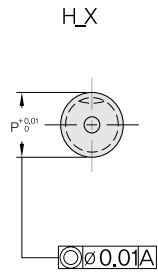
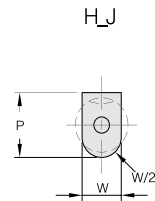
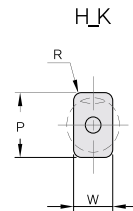
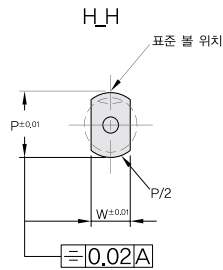
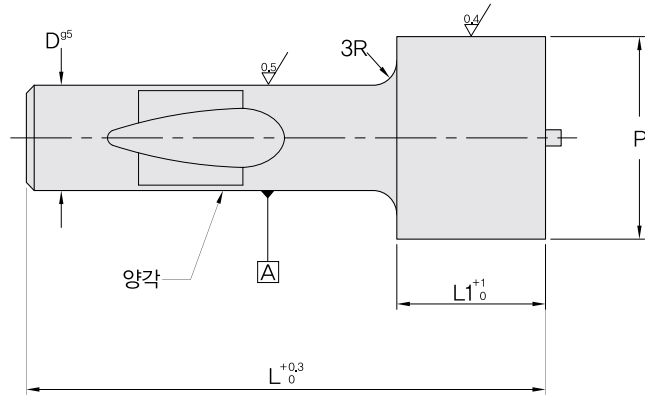




# PUNCH - HZ\_ • HK\_ BALL LOCK POINT LARGER THAN SHANK PUNCH

TYPE EJECTOR HZ\_(중하중용)

TYPE 표준형 HK\_(중하중용)



- \*  $P \geq W$
- \* R = 지정가능
- \*  $G = \sqrt{P^2 + W^2}$

