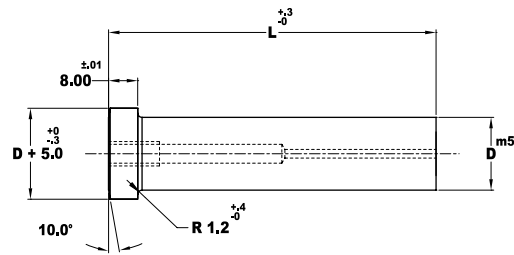
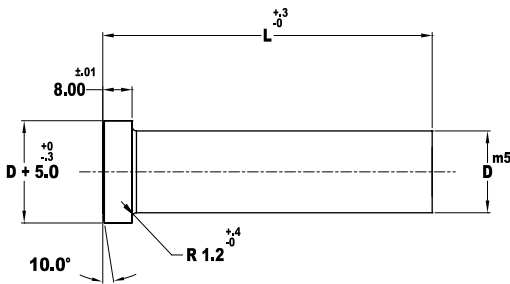
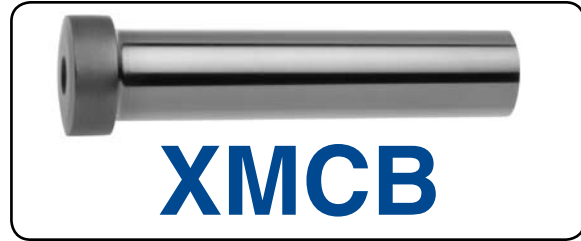
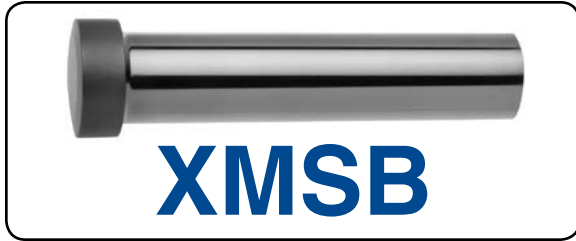


BASIC/SOLID/EJECTOR



Material

Steel: CPM M4 RC 60-62
Heads RC 40-55

FOR STANDARD ALTERATIONS SEE
MASTER CATALOG

CATALOG NUMBER SOLID	SHANK DIA D	OVERALL LENGTH "L"			
		70	80	90	100
XMSB 10	10	X	X	X	X
XMSB 13	13	X	X	X	X
XMSB 16	16	X	X	X	X
XMSB 20	20	X	X	X	X
XMSB 25	25	X	X	X	X
XMSB 32	32	X	X	X	X

CATALOG NUMBER EJECTOR	SHANK DIA D	OVERALL LENGTH "L"				EJECTOR SIZE
		70	80	90	100	
XMCB 10	10	X	X	X	X	MAE 5
XMCB 13	13	X	X	X	X	MAE 5
XMCB 16	16	X	X	X	X	MAE 6
XMCB 20	20	X	X	X	X	MAE 6
XMCB 25	25	X	X	X	X	MAE 6
XMCB 32	32	X	X	X	X	MAE 6