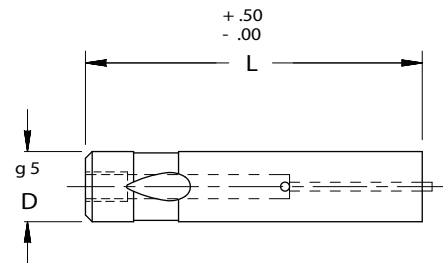
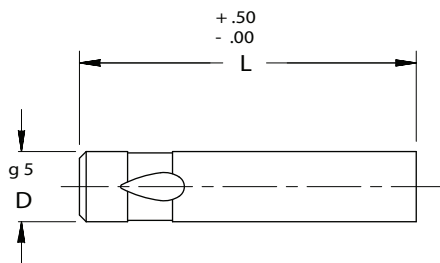


BALL LOCK PUNCH BLANKS



LIGHT DUTY/SOLID/EJECTOR



Material
Steel: M2, RC 60-63

FOR STANDARD ALTERATIONS SEE PAGES 49-54.

CATALOG NUMBER SOLID	SHANK DIA D	OVERALL LENGTH "L"					
		63	71	80	90	100	125
MLB 06	6	X	X	X	X	X	X
MLB 10	10	X	X	X	X	X	X
MLB 13	13	X	X	X	X	X	X
MLB 16	16	X	X	X	X	X	X
MLB 20	20	X	X	X	X	X	X
MLB 25	25	X	X	X	X	X	X

CATALOG NUMBER EJECTOR	SHANK DIA D	OVERALL LENGTH "L"					EJECTOR SIZE
		63	71	80	90	100	
MJB 06	6	X	X	X	X	X	MAE 3
MJB 10	10	X	X	X	X	X	MAE 4
MJB 13	13	X	X	X	X	X	MAE 5
MJB 16	16	X	X	X	X	X	MAE 5
MJB 20	20	X	X	X	X	X	MAE 6
MJB 25	25	X	X	X	X	X	MAE 6