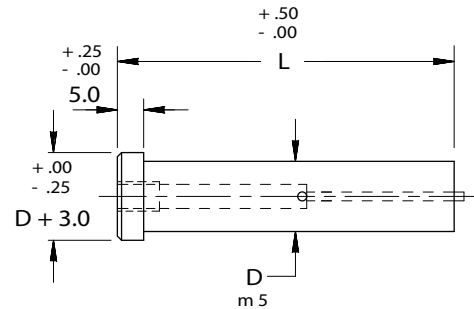
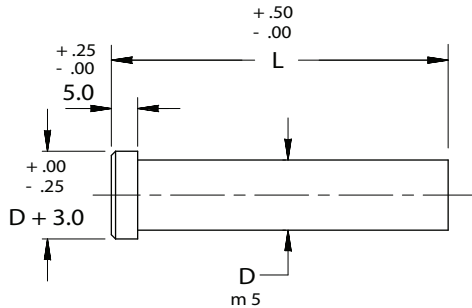


SHOULDER PUNCH BLANKS



SOLID/EJECTOR



Material

Steel: M2, RC 60-63
Heads RC 45-55

FOR STANDARD ALTERATIONS SEE PAGES 49-54.

CATALOG NUMBER SOLID	SHANK DIA D	OVERALL LENGTH "L"																
		40	50	56	60	63	70	71	80	90	100	120	125	150	155	160	165	170
MSB 04	4	X	X	X	X	X	X	X	X	X	X	X	X					
MSB 05	5	X	X	X	X	X	X	X	X	X	X	X	X					
MSB 06	6		X	X	X	X	X	X	X	X	X	X	X					
MSB 08	8		X	X	X	X	X	X	X	X	X	X	X					
MSB 10	10		X	X	X	X	X	X	X	X	X	X	X					
MSB 13	13		X	X	X	X	X	X	X	X	X	X	X	X				
MSB 16	16		X	X	X	X	X	X	X	X	X	X	X	X	X			
MSB 20	20			X	X	X	X	X	X	X	X	X	X	X		X		
MSB 25	25			X	X	X	X	X	X	X	X	X	X	X			X	
MSB 32	32					X	X	X	X	X	X	X	X	X				X
MSB 40	40								X	X	X							

CATALOG NUMBER EJECTOR	SHANK DIA D	OVERALL LENGTH "L"									EJECTOR SIZE
		50	56	60	63	70	71	80	90	100	
MCB 05	5	X	X	X	X	X	X	X	X	X	MAE 2
MCB 06	6	X	X	X	X	X	X	X	X	X	MAE 3
MCB 08	8	X	X	X	X	X	X	X	X	X	MAE 4
MCB 10	10	X	X	X	X	X	X	X	X	X	MAE 5
MCB 13	13	X	X	X	X	X	X	X	X	X	MAE 5
MCB 16	16	X	X	X	X	X	X	X	X	X	MAE 6
MCB 20	20		X	X	X	X	X	X	X	X	MAE 6
MCB 25	25		X	X	X	X	X	X	X	X	MAE 6
MCB 32	32				X	X	X	X	X	X	MAE 6
MCB 40	40							X	X	X	MAE 6