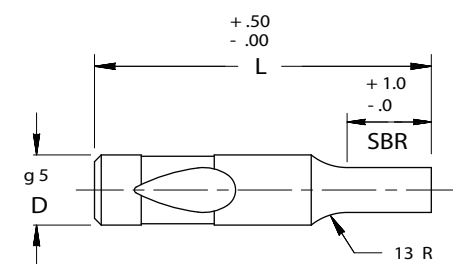
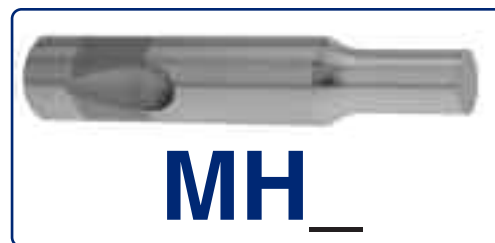
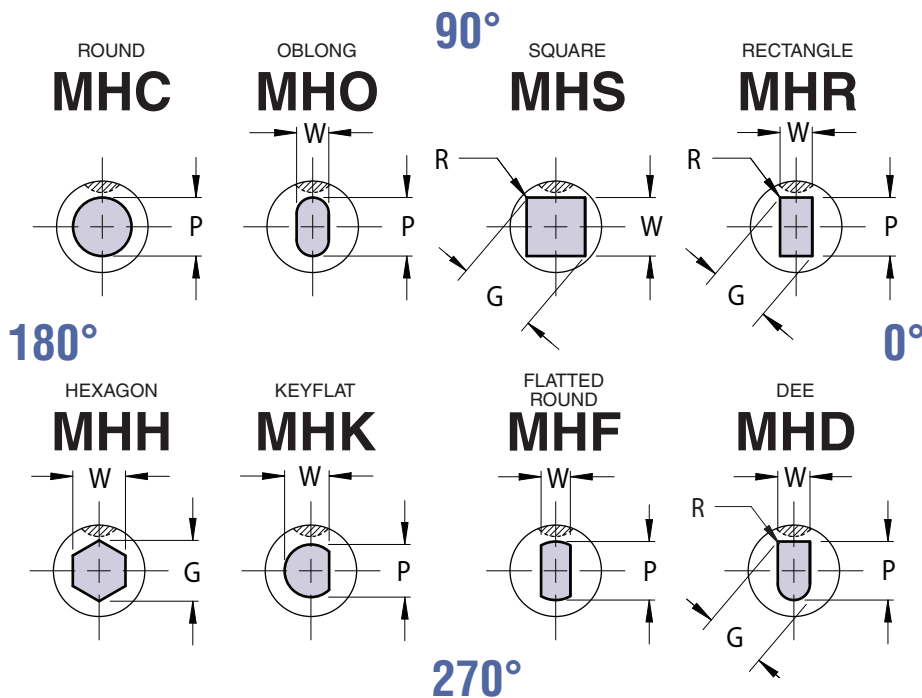


# BALL LOCK PUNCHES

## HEAVY DUTY/SOLID



FOR STANDARD ALTERATIONS SEE PAGES 49-54.

VIEWS ARE SHOWN LOOKING THROUGH THE SHANK BUT DRAWN WITH SOLID LINES FOR CLARITY.

CATALOG TYPE	SHANK DIA D	ROUND	SHAPE		OVERALL LENGTH "L"					
		RANGE P	MIN W	MAX G/P	71	80	90	100	110	125
MH_10	10	2.50 - 9.98	2.50	10.00	X	X	X	X	X	X
MH_13	13	5.00 - 12.98	4.50	13.00	X	X	X	X	X	X
MH_16	16	8.00 - 15.98	6.00	16.00	X	X	X	X	X	X
MH_20	20	12.00 - 19.98	8.00	20.00	X	X	X	X	X	X
MH_25	25	16.00 - 24.98	10.00	25.00		X	X	X	X	X
MH_32	32	24.00 - 31.98	12.00	32.00		X	X	X	X	X
MH_40	40	30.00 - 39.98	14.00	40.00		X	X	X	X	X

**Material**  
Steel: M2, RC 60-63

**Standard Point Tolerance**

Round P  $\begin{matrix} +.01 \\ -.00 \end{matrix}$  .01 P to D

Shape P, W  $\pm .01$  .02 P to D

When P = D Shank Tolerances Apply

CATALOG TYPE	SHANK D	SBR		
		NAPMA STD	ALTERNATES	
		B	C	
MH_10	10	19	10	—
MH_13	13	19	13	25
MH_16	16	19	13	25
MH_20	20	19	13	25
MH_25	25	19	13	25
MH_32	32	19	13	25
MH_40	40	25	19	30

L=71 SBR MAX=19

STANDARD BALL SEAT LOCATION IS AT 90° AS SHOWN. AVAILABLE AT 0°, 180°, 270°, FOR SAME PRICE.